

SAPERION SAP Suite

Your advantage

- + Certification for all current SAP releases
- + Flexible expansion options through open interfaces
- + Simple integrative use of all SAPERION components

New Demands

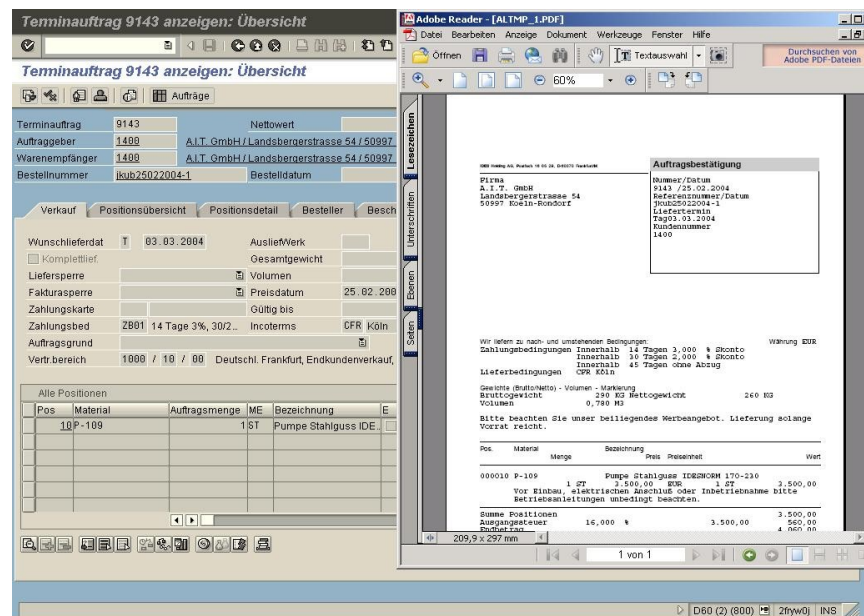
Constantly growing amounts of data, dispersed system architecture, the need to automate processes, and the desire for personalized work-stations place new demands on archiving and storage systems in the context of SAP.

Above all, this includes the optimization of business processes via workflow, the automatic extraction and booking of documents from incoming documents to multi-topic ones, the effective information retrieval with the help of modern, interactive file structures, and the integration of useful archiving tools into the role-based workstation of the ERP application.

The SAPERION SAP SUITE is the answer to all of these requirements. It features a modular design and can be adapted to the unique requirements of the customer. In addition to the starter pack, SAPERION offers small, medium, and full versions of the suite.

Document Archiving

- + SAP incoming documents (NCI) with all scenarios;
- + SAP outgoing documents (CI);
- + Print lists with hyperlinks;



Indexer: More Information More Easily

The Indexer transfers - in addition to the standard range of functions provided by the ArchiveLink interface - document attributes from SAP to

The SAPERION SAP SUITE: An Overview

Basic: Proven Standards, Compact and Effective

The basic module of the SAPERION SAP SUITE offers all standard SAP storage options starting with the SAP 3.0E release, and it supports the SAP workflow.

Data Archiving

- + Database Reorganization.

SAPERION connects to SAP either via RFC or http interface. The SAP Cache Server is supported in the standard version. The SAPERION viewer can be used if desired.

SAPERION during the archiving process. This allows non-SAP users to look up information via the SAPERION Client or simply via the WEB.

FastLink: Measurable Added Value with FastLink

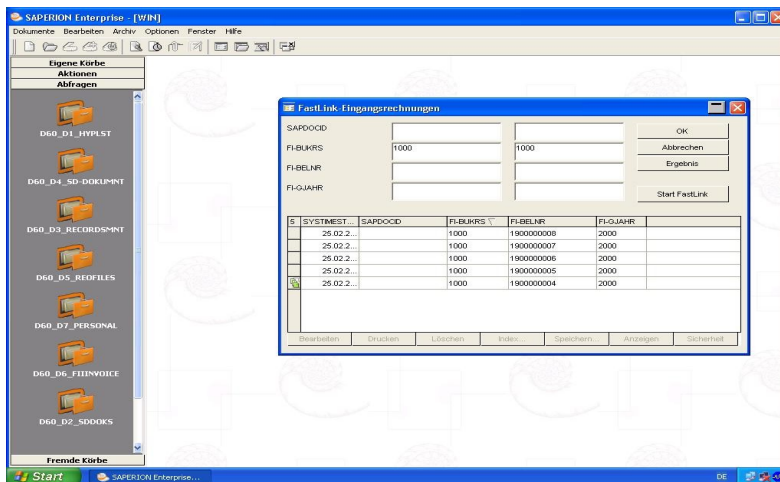
FastLink allows the mass-linking of already archived documents with SAP documents. A prime example is the

link to output-management systems: SAP transfers the prepared and printed documents to the output-management system. These documents are simultaneously archived in SAPERION. The DocID is then sent back to SAP. This offers SAP users the advantage that these documents can also be found, compiled, and retrieved through the SAP interface.

extensive data entry, thus contributing significantly to the optimization of business processes.

Document Finder Integration: Everything at a Glance

The SAP Document Finder and SAPERION offer optimal search



InboundLink: Best of Breed Solution for All Incoming Documents

The SAPERION InboundCenter provides the latest technology for the wide ranging demands of managing incoming mail and classifying and extracting information – all through one interface. Regardless of whether they are paper documents, e-mails, or Office documents: the SAPERION® InboundCenter is the best-of-breed solution that combines full-text searches and knowledge management tools with SAPERION's own technology, without requiring complex integrations into existing applications.

These advantages of the SAPERION InboundCenter are also available for all SAP users. The combination of SAPERION InboundCenter and SAP Business Workflow saves time and

mechanisms and viewing options. Any document that has been saved in SAPERION, even without reference to SAP, can be found and viewed in the SAP Look and Feel.

Records Management Integration: File Structures Provide Clarity - All the Way to the Archive

SAP Records Management is the SAP standard solution for the electronic management of files in SAP, based on the SAP Web Application Server 6.20.

Your advantage

- + Certification for all current SAP releases
- + Flexible expansion options through open interfaces
- + Simple integrative use of all SAPERION components

With Records Management, customer-related files and information can be compiled, edited, and evaluated—such as information about ordering behavior, payment reliability, and complaints.

Furthermore, Records Management allows the linking of files with various documents and objects that have already been archived in SAPERION. Thus, the advantages and features of the SAP archive via ArchiveLink in SAPERION are also available for Records Management. In addition, any desired documents from SAPERION can be made available to the files in Records Management. The scanning of documents and the revision-proof storage in SAPERION can be initiated directly from within the file.

The SAPERION ServiceProvider will provide SAP Records Management with additional information out of SAPERION in the near future.

Mehr Informationen

SAPERION AG
Gradestraße 36
12347 Berlin

Tel.: +49 30 600 61 – 200
Fax.: +49 30 600 61 – 500

info@saperion.com
www.saperion.com

SAPERION (Schweiz) AG
Stampfenbachstrasse 48
CH – 8035 Zürich

Tel.: +41 44 356 77-99
Fax.: +41 44 356 77-07

info@saperion.com
www.saperion.com