

The New SAPERION 5.6

The Novelties:

SAPERION Workflow

Whether quotation drafts or idea collection – with SAPERION 5.6, you can map unstructured processes and realize your business process management spontaneously and without high programming efforts. In addition to the routing of documents SAPERION can now be applied to the control of documents without any document reference. Docflow will thus become a workflow!

The highlight of SAPERION 5.6 is the “ad-hoc workflow”. It provides users of the classic Enterprise ECM Solution an easy and cost-efficient entrance to business process management. All users are assigned with their individual workflow in-box, which allows them to participate in the business processes. By means of a circulation list it is determined which task will be completed by which person at which time.

- + Perfect in case a complex BPM is not needed at the first stage where small processes are supposed to be initiated spontaneously and independently – without any administrative efforts.

Multi-Client Feature

With the SAPERION multi-client feature, completely independent application environments and different administration levels can be realized.

As a consequence, Application Service Providers can use SAPERION also for various clients from now on. In the

same way, enterprises with many sub-companies can separate and protect the individual data sets.

Electronic Mass Signature

Electronic signature components are now completely integrated into the SAPERION client. Apply the option “mass signature” whenever huge amounts of data, such as in case of the in-box, have to be signed electronically.

- + High security thanks to the 5-stage-model for the verification of the electronic signature

A short sneak:

- + The robust basis for information management and decision-making processes in your company

Improved Full-Text Search in ORACLE SQL and MS SQL Server

For the optimized full-text search, the full-text engines available in Oracle and Microsoft SQL Server can be used with the new SAPERION 5.6. The interface will stay unchanged for the users.

- + Improved performance in case of combined inquiries
- + Indexing for full-text search is possible both in a synchronous and asynchronous way

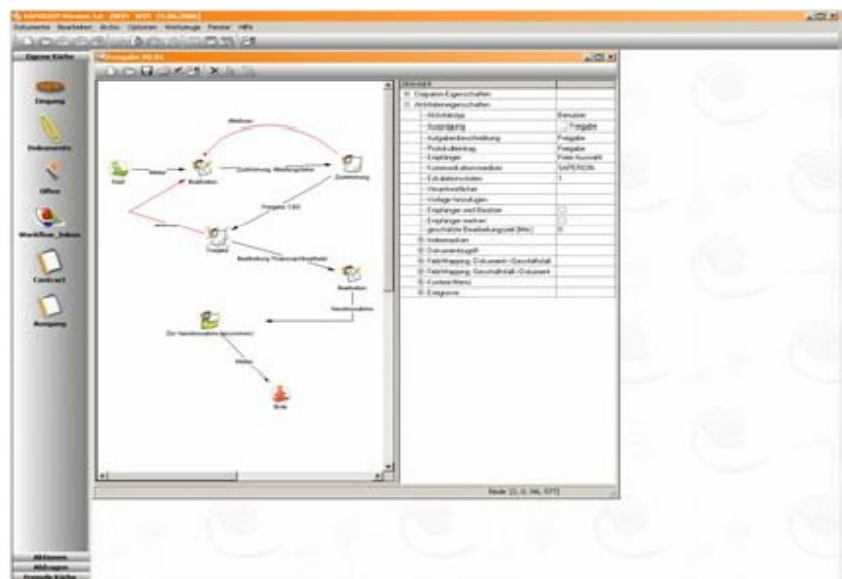


Illustration 1: Initiating small processes spontaneously and autonomously with the ad-hoc workflow of SAPERION 5.6

Interface to Application Programming

By means of the new API interface for application programming, the functionality of the SAPERION Engine Platform will be provided independently – based upon the SAPERION Unified Base Interface.

SAPERION Web-wide

Sharepoint Portal Server Integration

SAPERION 5.6 is completely integrated into the Microsoft Sharepoint Portal Server (SPS). In this way, very large data sets can be managed quite easily within the SPS infrastructure.

You can transfer documents directly from the Sharepoint Document Library to SAPERION – user-driven or automatically – and search for stored documents directly from the SPS.

WEBDAV Server

SAPERION 5.6 supports the WebDAV 2 standard and can thus completely be integrated into the Windows Explorer. The intuitive interface allows you to access your SAPERION archive directly via the Explorer.

Files and folder structures of the Windows explorer can be used as usual for accessing the information.

HTML Client

Via style sheets and Java script, the SAPERION HTML client can be configured virtually without any restrictions as concerns appearance and functionality. Moreover, it can be integrated into individual Web solutions and portals.

mySAP meets SAPERION ECM

All functionalities of SAPERION 5.6 are now available as iView in the SAP Enterprise Portal 6. The most important functionalities such as “Search with search mask and hit list as result”, “di-

rect displaying of documents” or “filing with or without indexing” are implemented into individual iViews.

Users are thus given an integrative Back End to Back End infrastructure solution, which has traditionally been delivered as an Enterprise Portal Business Package. The new generation of the SAPERION Suite for SAP solutions provides the Fast Indexer for automatic indexing. The software completely runs in SAP and is directed to mass processing and easy operation.

Therefore, it is especially suitable for huge installations – perfect for rapidly growing data sets and distributed system architectures.

Mobile Working with Comfort

The previous SAPERION Mobile Client was revised to a large extent and was assigned a new name: Offline Option. The simplified interface is geared to ActiveSync (PDAs). Documents can be edited by several users both synchronously and offline. Simultaneously, editing in the main system is still possible.

E-Mail-Lifecycle Management

With E-Mail-Lifecycle Management, SAPERION 5.6 offers a brand-new product for e-mail archiving and information lifecycle management for the Microsoft Exchange Server. It is a high-performance tool that can be used for archiving incoming and outgoing e-mails on the Microsoft Exchange Server automatically and in the background, unnoticed by the user.

- + Generating PST files or the troublesome process of deleting old e-mails in order to clear space are thus a thing of the past.

Your advantages:

- + Easy and rapid rolling-out
- + Arbitrarily scalable
- + First-class TCO

Why the update to 5.6 is worthwhile!

The SAPERION ECM Suite offers many innovations that make everyday life at work far more efficient.

The ad-hoc workflow, for instance, permits the targeted, spontaneous forwarding for the purpose of control, editing, releasing. In addition, it allows you to always have control over the documents in circulation.

Furthermore, there are many innovations such as the e-mail lifecycle management for Microsoft Exchange which puts an end to the troublesome clearing of the in-box. It also allows you to concentrate on your ultimate tasks. There is as well a revised Offline option that enables mobile workers to conveniently edit their documents.

Weitere Informationen

SAPERION AG
Gradenstraße 36
12347 Berlin

Tel.: +49 30 600 61 – 200
Fax.: +49 30 600 61 – 500

info@saperion.com
www.saperion.com

SAPERION (Schweiz) AG
Stampfenbachstrasse 48
CH – 8035 Zürich

Tel.: +41 44 356 77-99
Fax.: +41 44 356 77-07

info@saperion.com
www.saperion.com